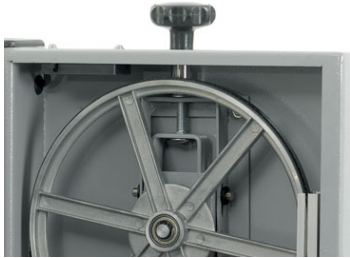


## BS250



### Optional Stand & Wheelkit Available

The optional stand and wheelkit allow the BS250 to be moved easily around the workshop.



### Strong Tension System

Provides more than adequate tension for the blade capacities of this machine. Tension is easily set from the top of the machine, to adjust the dynamically balanced band wheels.



### Blade Guides

The blade guides are easily adjustable and move on a lockable rack and pinion rise-and-fall system.



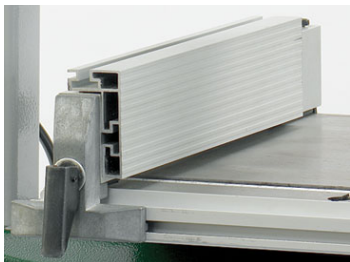
### Sealed for Life Bearings

These require no maintenance for the life of the machine. The drive belt is situated beneath the lower band wheel and can be adjusted to the desired tension from the rear.



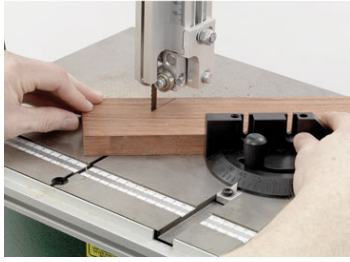
### Impressive Capacity

Large 120mm depth of cut and 240mm throat depth make this a compact machine capable of serious work.



### Strong Fence

With cam action lock for ease of use and simple tension adjustment for clamping strength.



## Cast Iron Table

A solid, finely ground cast iron table provides an ideal and low friction work support.



## Solid Trunnion

The table tilts from 0 - 45° on a solid trunnion with easy to read scale.



## Bandsaw Masterclass DVD Included

Presented by Alan Holtham, this indispensable DVD gives a thorough and comprehensive introduction to bandsaw use, setup, maintenance and blade choice.