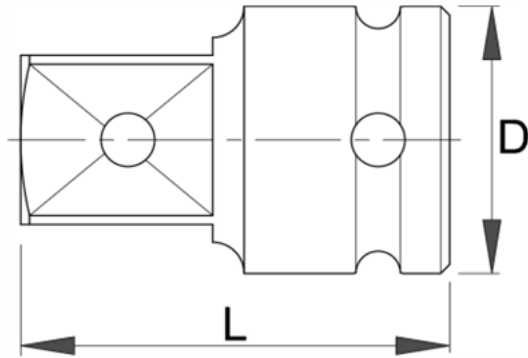


## Adaptor de IMPACT 1" - 233.7/4



### Descriere

- material:crom molibden
- forjata, calire si revenire totala
- acoperire prin brunare dupa standardul DIN 12476

### Date Tehnice

Barcode	Size	D	L	Weight	Material	Coating	Other
615217	1" - 3/4"	54	75	661	C	1	0
617303	1" - 1.1/2"	54	90.5	1107	C	1	0

### Date de ambalare

Barcode	Size	Mod de reambalare.			Ambalare pentru transport.					
		A	B	C	Weight	Volume	A1	B1	C1	Weight
615217	1" - 3/4"	54	100	54	666	1	-	-	-	-
617303	1" - 1.1/2"	54	100	54	1112	1	-	-	-	-