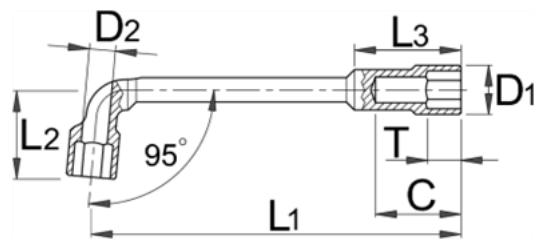
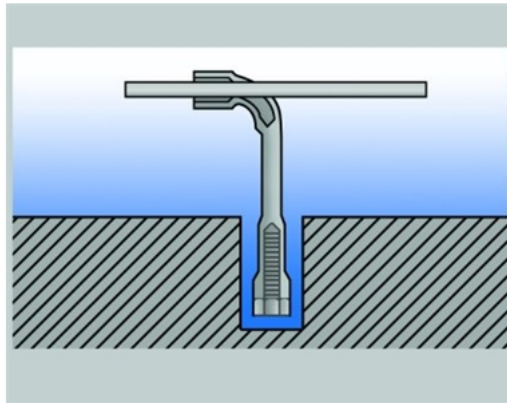


## Chei tubulare pipa - 177



### Descriere

- material: crom vanadiu
- forjata, calire si revenire totala
- acoperire cromare conform EN12540

### Date Tehnice

Barcode	Ø	L1	L2	C	D1	T	L3	D2	Icon 1	Icon 2	Icon 3	
609083	8	120	25	24	12	9	30	7	76	A	10	0
609084	9	120	25	25	13	9	30	7	78	A	10	0
609085	10	127	30	30	15	12	36	8	123	A	10	0
609086	11	127	30	30	16	13	36	8	125	A	10	0
609087	12	143	34	34	17	13	43.5	8	161	A	10	0
609088	13	150	34	34	20	13	43.5	12	186	A	10	0
609089	14	170	40	40	21	14	48	12	226	A	10	0
609090	15	171	40	40	22	15	48	14	236	A	10	0
609091	16	197	45	46	24	17	57	15	340	A	10	0
609092	17	197	45	46	25.3	18	57	15	360	A	10	0
609093	18	209	52	49	28.5	18	61	15	411	A	10	0
609094	19	209	52	49	28.5	19	61	15	445	A	10	0
609095	20	220	54	55	29.5	21	63.5	15	495	A	10	0
609096	21	220	54	55	30	22	63.5	15	487	A	10	0
609097	22	241	60	61	32	22	68	16	590	A	10	0
609098	23	241	60	61	33	24	74	20	640	A	5	0
609099	24	242	63	65	34.5	25	77.5	20	713	A	5	0

### Date de ambalare

Barcode	Ø	Mod de reambalare.			Ambalare pentru transport.					
		A	B	C	Icon 1	Icon 2	A1	B1	C1	Icon 3
609083	8	170	50	13.5	76	4	55	204	65	304
609084	9	170	50	14.5	78	4	55	204	65	312
609085	10	170	50	16.5	123	4	55	204	65	492
609086	11	185	50	17.5	125	4	55	204	65	500
609087	12	190	55	18.5	161	4	91	230	62	644
609088	13	190	55	21.2	186	4	91	230	62	744
609089	14	200	60	22.5	226	4	91	230	62	904
609090	15	210	65	23.5	236	4	91	230	62	944
609091	16	230	75	25.5	340	4	104	277	68	1360
609092	17	235	75	26.9	360	4	104	277	68	1440
609093	18	245	80	27.9	411	4	84	318	63	1644
609094	19	245	80	29.9	445	4	90	330	84	1780
609095	20	285	85	31	495	4	144	304	78	1980
609096	21	250	85	31	487	4	144	304	78	1948
609097	22	265	85	31.5	590	4	144	304	78	2360
609098	23	280	90	34.5	640	4	144	304	78	2560
609099	24	280	95	36	713	4	144	304	78	2852