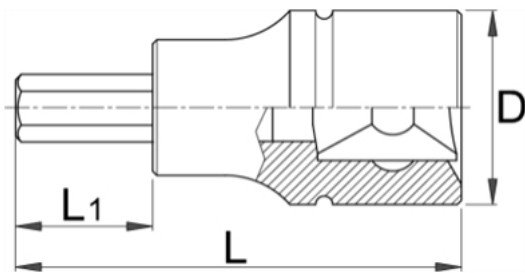
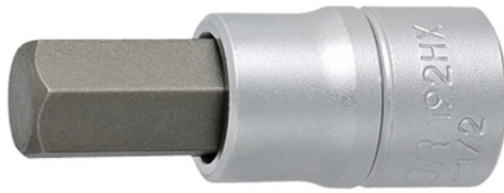


Capete chei tubulare cu profil hexagonal exterior 1/2" - 192/2HX



Descriere

- material: capete chei tubulare: crom-vanadiu, acoperire cromare
- bit: otel special de scule
- capul cheii este tratat in intregime
- dimensiunile 17, 19, 22, 24 sunt utilizate pentru schimbarea și montarea roților fata
- produs conform standardului DIN 7422 (doar pentru dimensiunile in mm)

Date Tehnice

Barcode	Hex Size	D	L	L1	Weight	Material	Length	Width
600978	4	23	60	24	60	B	10	0
603420	5	23	60	24	60	B	10	0
603421	6	23	60	24	60	B	10	0
603422	7	23	60	24	75	B	10	0
603423	8	23	60	24	81	B	10	0
605923	9	23	60	24	85	B	10	0
603424	10	23	60	24	95	B	10	0
603425	12	23	60	24	116	B	10	0
603426	14	23	60	24	168	B	10	0
603427	17	24	60	20	187	B	10	0
603428	19	26.5	60	20	195	B	10	0
623141	22	26.5	60	20	196	B	-	0
623142	24	26.5	60	20	210	B	-	0
619894	3/16"	22.9	40	24	60	B	10	0
619895	7/32"	22.9	40	24	60	B	10	0
619896	1/4"	22.9	40	24	60	B	10	0
619898	5/16"	22.9	40	24	81	B	10	0
619899	3/8"	22.9	40	24	95	B	10	0
619900	1/2"	22.9	40	24	116	B	10	0
619901	9/16"	22.9	40	24	168	B	10	0
619902	5/8"	22.9	40	24	187	B	10	0
619904	3/4"	26.8	40	21	195	B	10	0

Date de ambalare

Barcode	Hex Size	Mod de reambalare.				Ambalare pentru transport.				
		A	B	C	Weight	Length	A1	B1	C1	Weight
600978	4	130	44	43	65	4	94	150	59	385
603420	5	130	44	43	65	4	94	150	59	385
603421	6	130	44	43	65	4	94	150	59	385
603422	7	130	44	43	80	4	94	150	59	445
603423	8	130	44	43	86	4	94	150	59	469
605923	9	130	44	43	90	4	94	150	59	485
603424	10	130	44	43	100	4	94	150	59	525
603425	12	130	44	43	121	4	94	150	59	609
603426	14	130	44	43	173	4	94	150	59	817
603427	17	130	44	43	192	4	94	150	59	893
603428	19	130	44	43	200	4	94	150	59	925
623141	22	122	44	43	205	4	94	150	59	865
623142	24	122	44	43	220	4	10,4	16,8	61	935
619894	3/16"	130	44	43	65	4	94	150	59	385
619895	7/32"	130	44	43	65	4	94	150	59	385
619896	1/4"	130	44	43	65	4	94	150	59	385
619898	5/16"	130	44	43	86	4	94	150	59	469
619899	3/8"	130	44	43	100	4	94	150	59	525
619900	1/2"	130	44	43	121	4	94	150	59	609
619901	9/16"	130	44	43	173	4	94	150	59	817
619902	5/8"	130	44	43	192	4	94	150	59	893
619904	3/4"	130	44	43	200	4	104	168	61	925