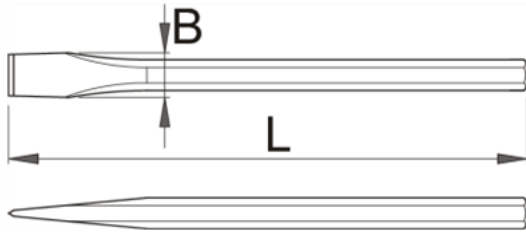


Dalta de lemn - 660/6A



Descriere

- material:crome vanadium
- forjata
- tratat complet
- capatul tratat prin inductie
- acoperire:vopsire
- executie conform standardului DIN 7254

Date Tehnice

Barcode	L	Hex	B	Weight	Material	Coating	0
608554	125	10	12	76	P	10	0
608492	250	16	23	403	P	10	0
608493	300	18	26	612	P	10	0
608494	350	18	26	724	P	5	0
608495	400	20	30	1019	P	5	0
608496	500	20	30	1236	P	5	0

Date de ambalare

Barcode	L	Mod de reambalare.				Ambalare pentru transport.				
		A	B	C	Weight	Hand	A1	B1	C1	Weight
608554	125	176	41	10	76	1	-	-	-	-
608492	250	280	50	16	403	1	-	-	-	-
608493	300	363	61	18	612	1	-	-	-	-
608494	350	412	61	18	724	1	-	-	-	-
608495	400	465	61	20	1019	1	-	-	-	-
608496	500	545	61	20	1236	1	-	-	-	-