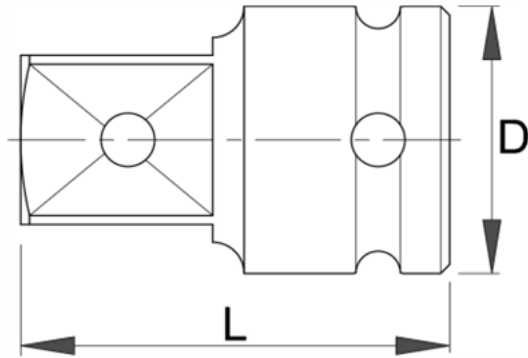


Adaptor de IMPACT 3/4" - 232.7/4



Descriere

- material:crom molibden
- forjata, calire si revenire totala
- acoperire prin brunare dupa standardul DIN 12476

Date Tehnice

Barcode	Size	D	L	Weight	Material	Coating	Other
603995	3/4" - 1/2"	44	56	323	1B	1	0
618708	3/4" - 1"	44	63	443	1B	1	0

Date de ambalare

Barcode	Size	Mod de reambalare.			Ambalare pentru transport.					
		A	B	C	Weight	A1	B1	C1		
603995	3/4" - 1/2"	165	58	44	325	1	70	191	55	385
618708	3/4" - 1"	173	58	44	450	1	70	240	48	520