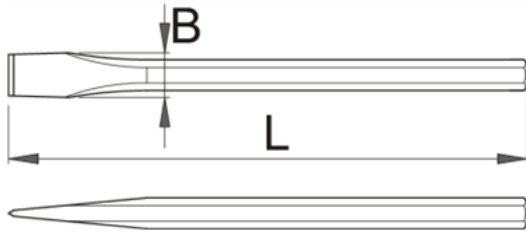


Dalta pentru electricieni - 665/6A



Descriere

- material:crome vanadium
- forjata
- tratat complet
- capatul tratat prin inductie
- acoperire:vopsire

Date Tehnice

Barcode	L	Hex	B	Weight	Mod	Length	Count
608500	250	8	10	110	1P	10	0
608501	250	10	10	160	1P	10	0

Date de ambalare

Barcode	L	Mod de reambalare.					Ambalare pentru transport.			
		A	B	C	Weight	Mod	A1	B1	C1	Weight
608500	250	280	50	8	110	1	-	-	-	-
608501	250	280	50	10	160	1	-	-	-	-