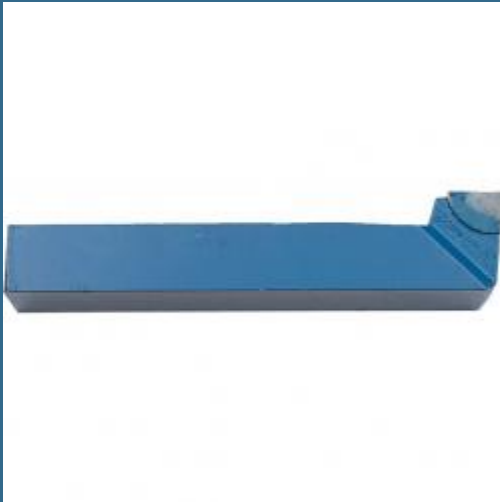


CROMWELL Kennedy. Brazed Tool, 162, For use with Cranked Turning, P40



Cod produs:

KEN1002825K

preturile contin TVA 21%

Caracteristici

Dimensiuni ambalaj:

Lungime mm: 16

Latime mm: 2

Inaltime mm: 2

Greutate g: 57

Despre produs

Kennedy Brazed Tip Turning & Boring Tools are manufactured in three standard grades. (All sizes are nominal). Manufactured to ISO DIN BHMA Standards. P40: Roughing to heavy roughing of steel and steel castings using heavy feeds and low to medium cutting speeds. Also used under unfavourable conditions, particularly where intermittent cutting is involved. This grade is also suitable for planing operations and for machining manganese steel.